

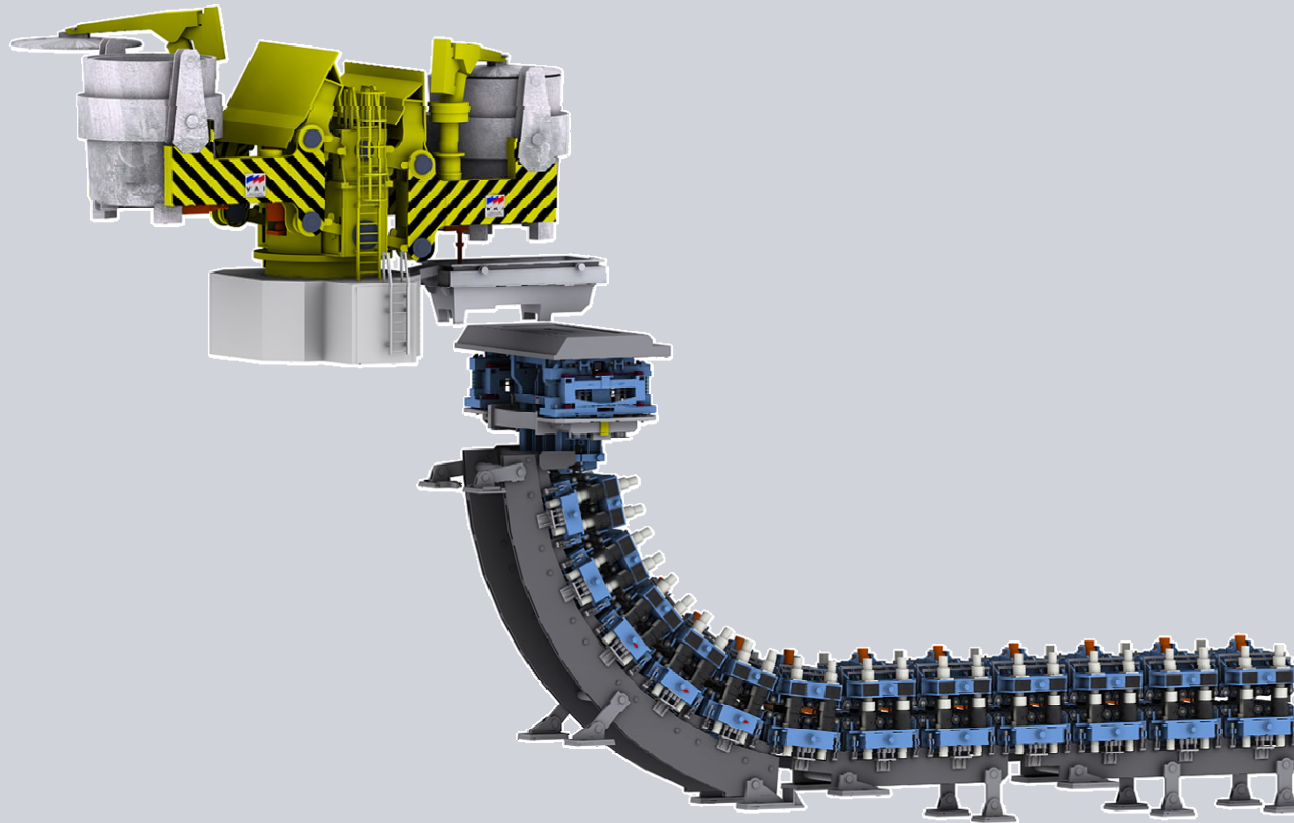
Vom Projektgeschäft zur Produktlinie

Ein Erfahrungsbericht aus der Automationsbranche

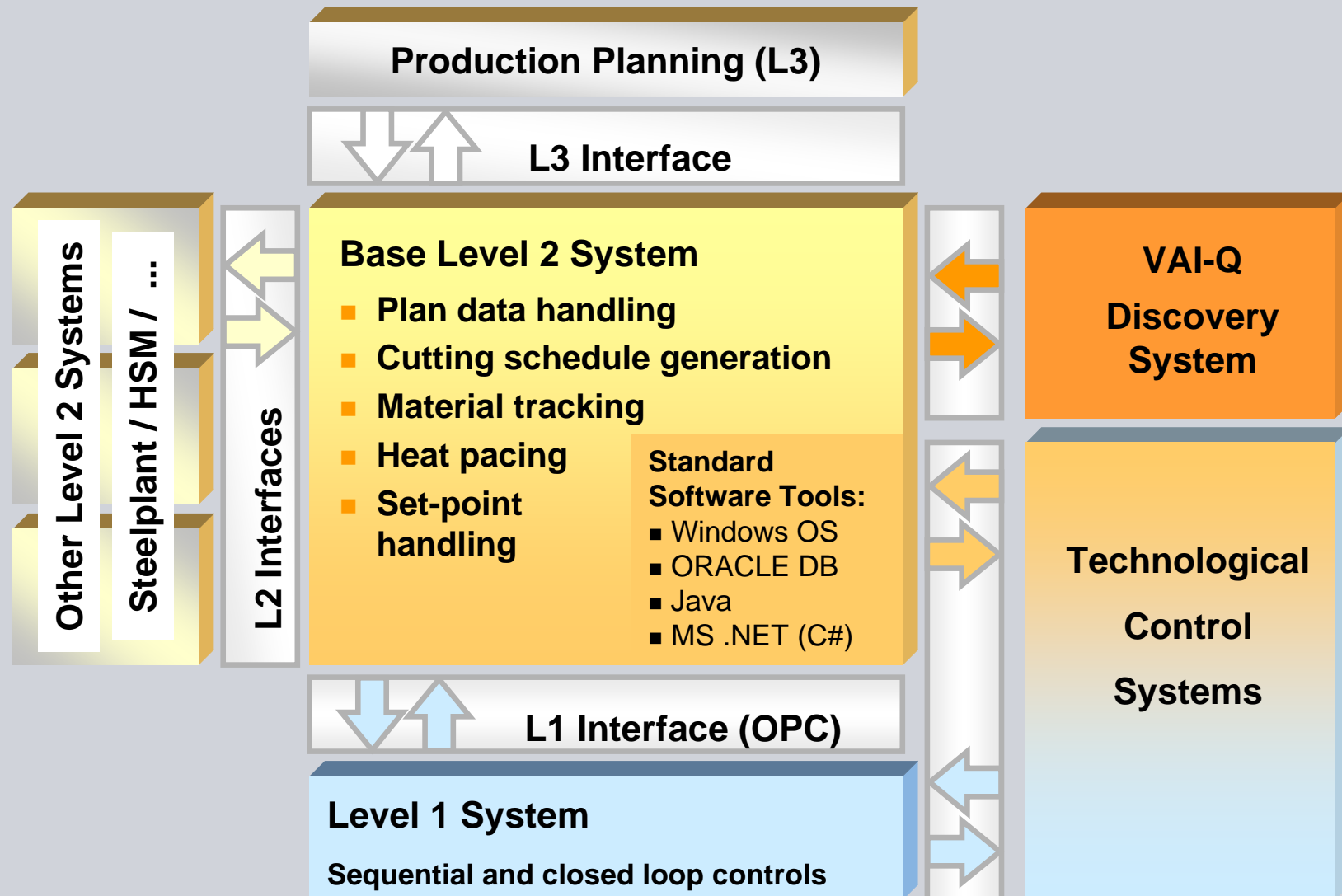
CMConf 2008
16.10.2008, München
Martin Lehofer

Problemumfeld Metallurgie

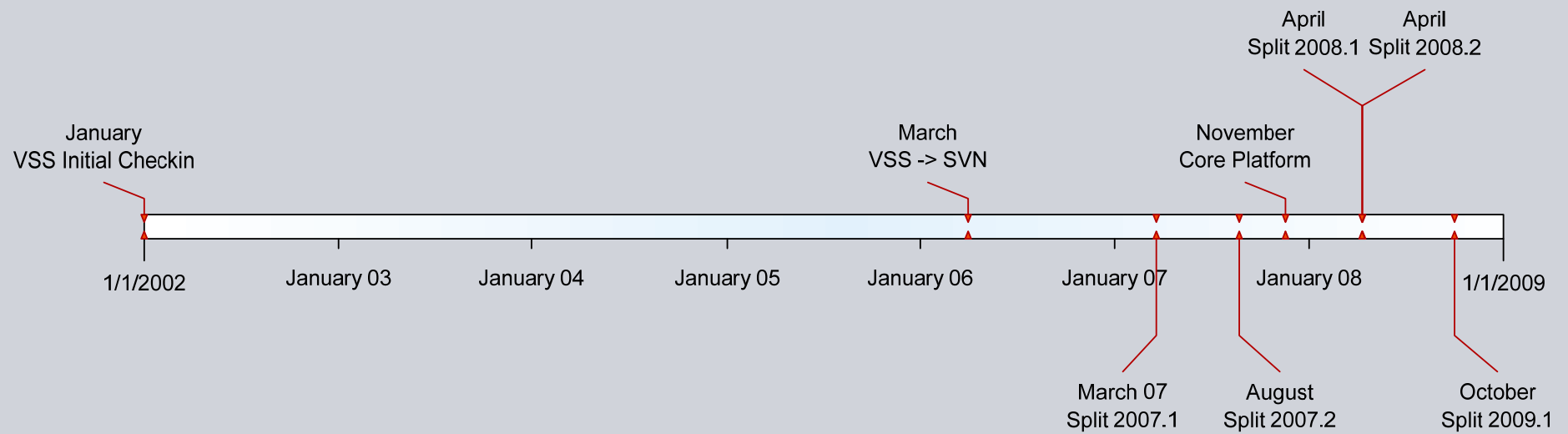
Was ist eine Stranggussanlage?



Problemumfeld Software Engineering System of Systems

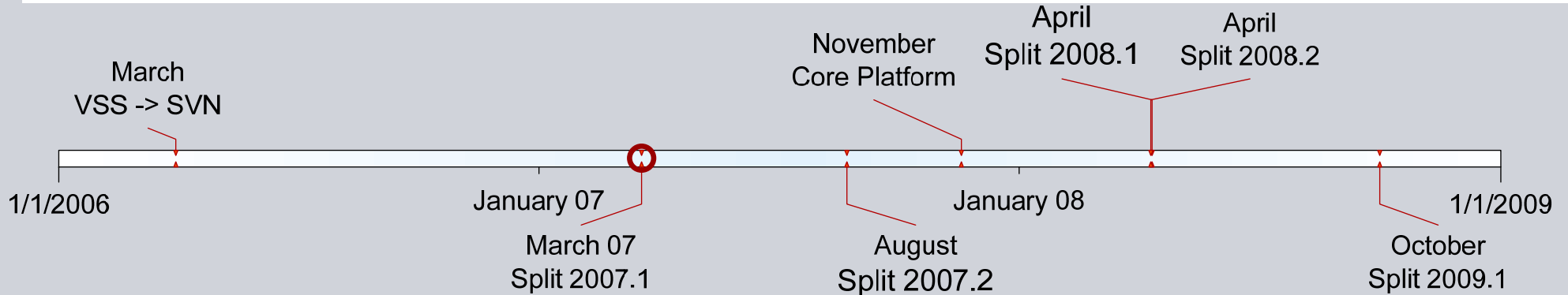


Vom Produkt zur Produktlinie Überblick



Vom Produkt zur Produktlinie (2)

SIMETAL^{CIS} CC Optimization

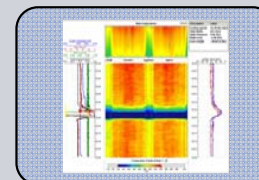


PRJ_X PRJ_Y PRJ_Z

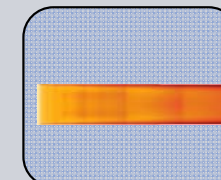
SIMETAL^{CIS} CC Optimization



SIMETAL^{CIS}
MoldExpert



SIMETAL^{CIS}
Dynacs

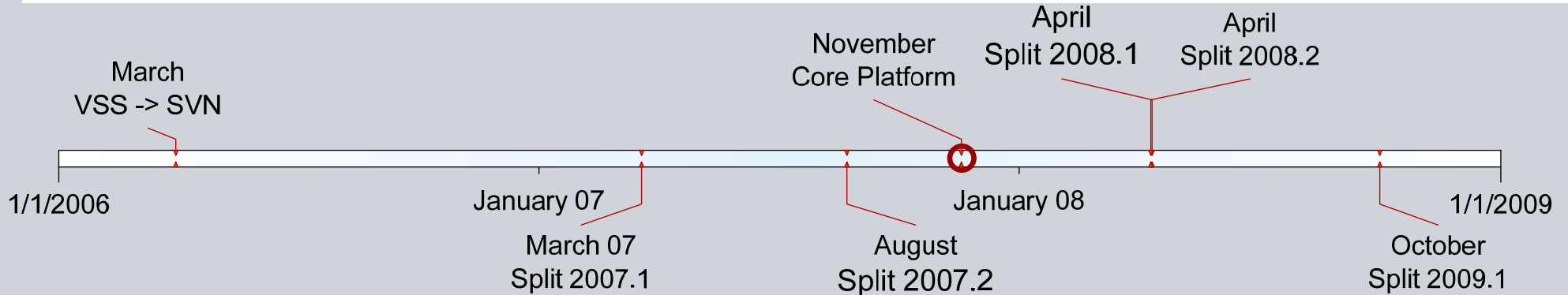


SIMETAL^{CIS}
VAIQ

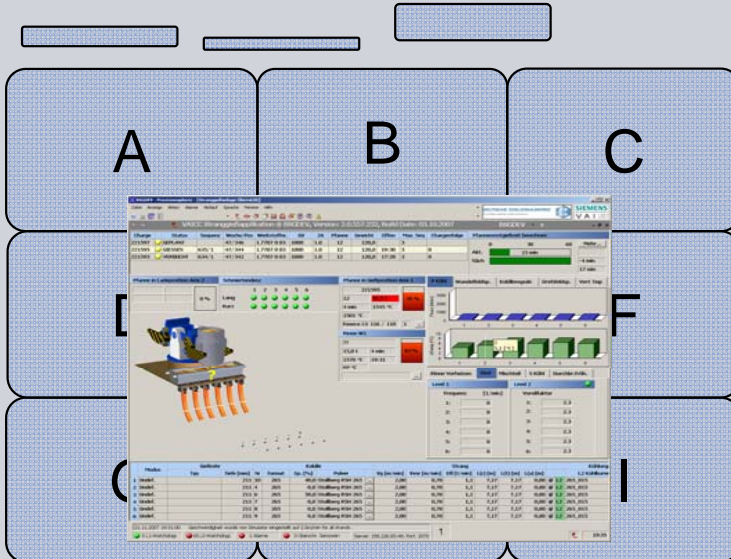


Java Automation Platform

Vom Produkt zur Produktlinie (4) Die SIMETAL^{CIS} CC Optimization Produktlinie



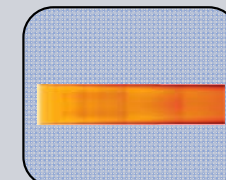
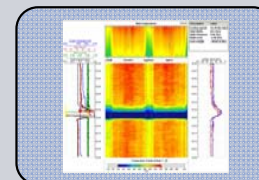
PRJ_X PRJ_Y PRJ_Z



SIMETAL^{CIS}
MoldExpert

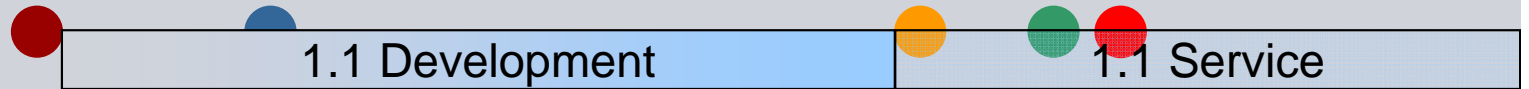
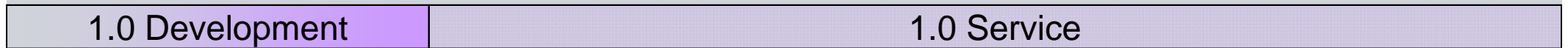
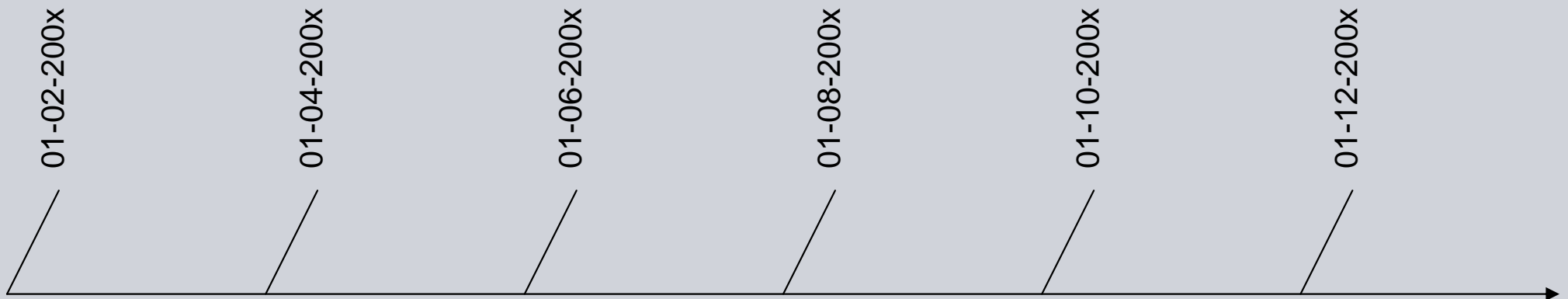
SIMETAL^{CIS}
Dynacs

SIMETAL^{CIS}
VAIQ



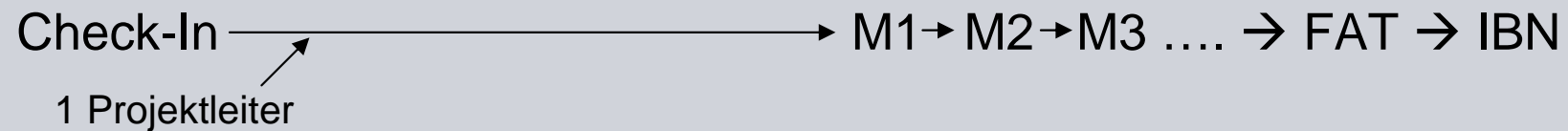
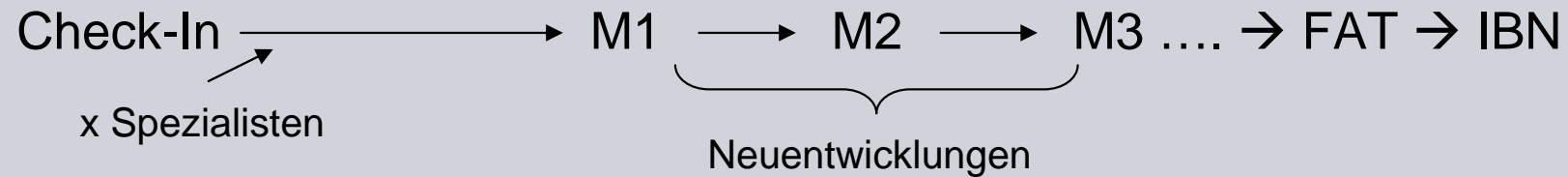
Java Automation Platform

Release Planning



- PRJ_W ●
- PRJ_X ●
- PRJ_Y ●
- PRJ_Z ●

Projektentwicklung

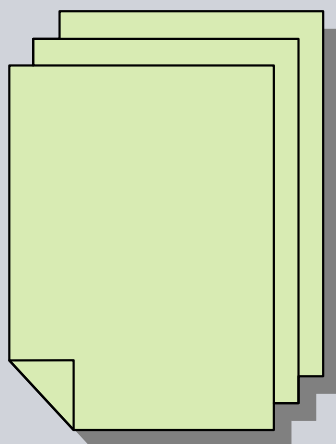


Klassifizierung	Standardnähe	Änderungen	Änderungen Standardrelevant
M5	++	0	+
M10	+	+	++
M15	--	++	--

Check-in Meeting

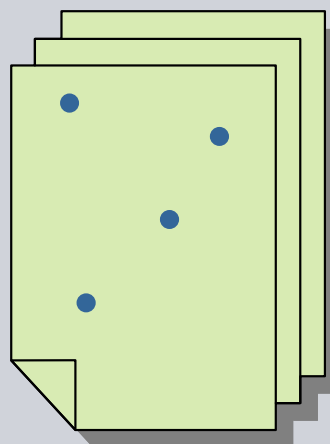
1.

DTS



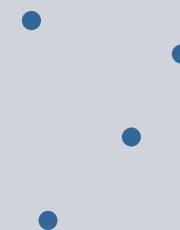
2.

DTS with
features

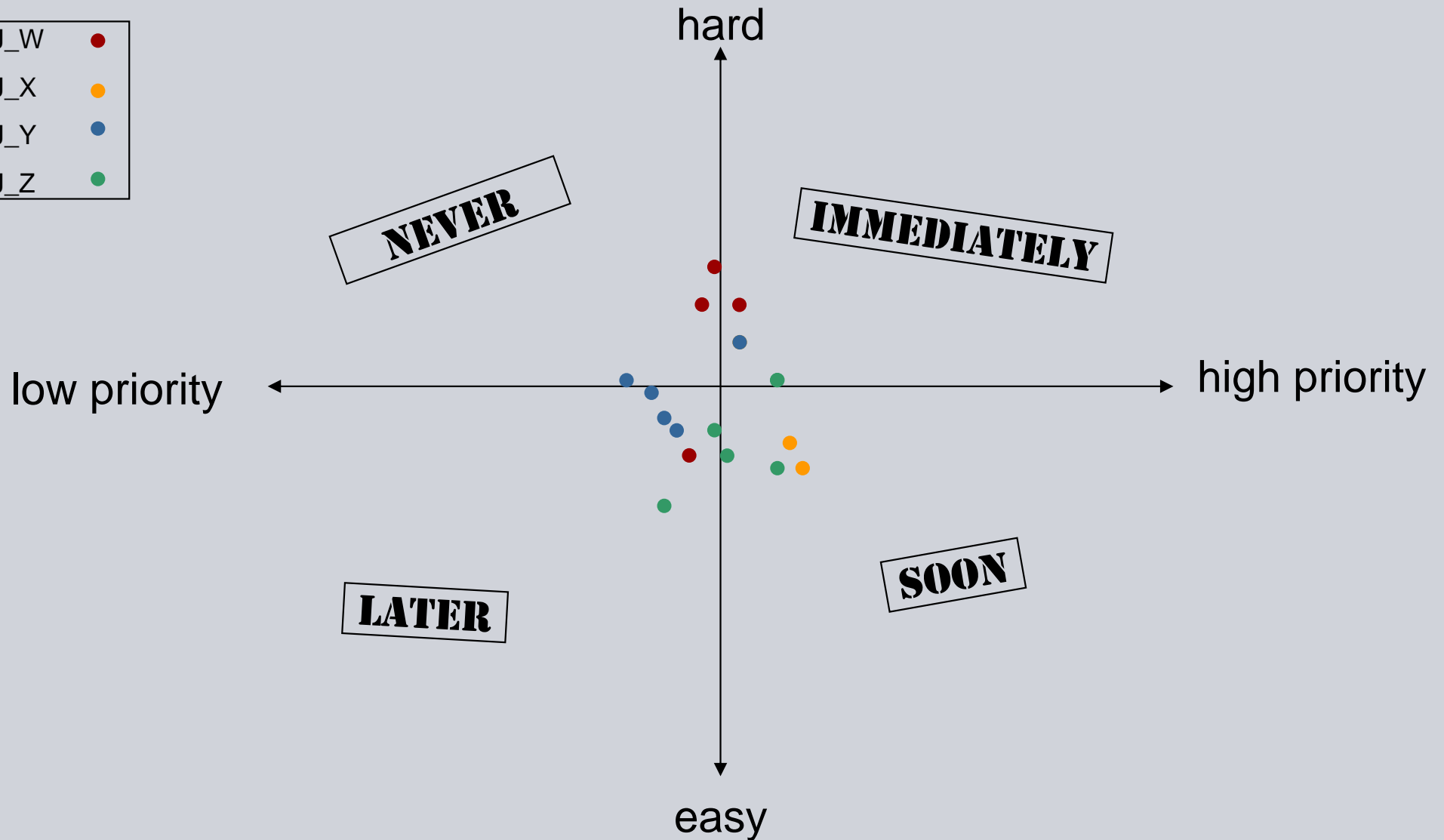
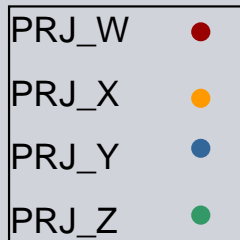


3.

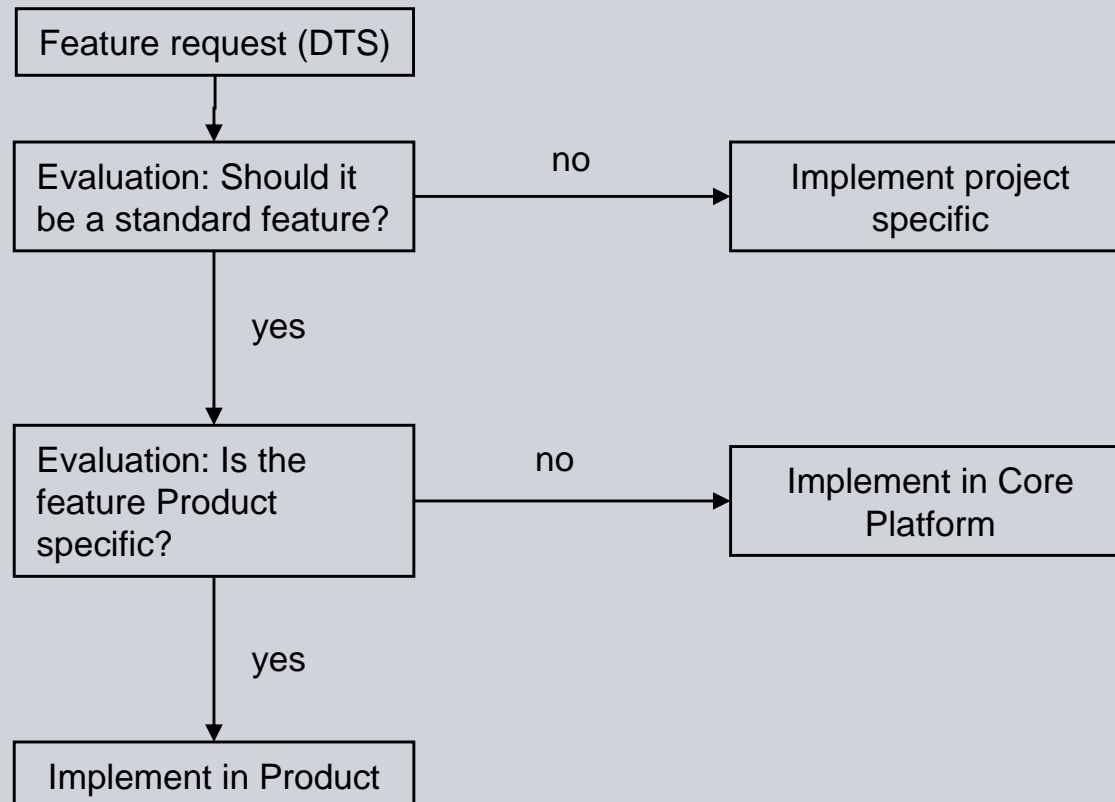
Features



Detail Release Planning



Feature Negotiation



Releasezyklus

Workspace

Sekunden

Continuous

Minuten

Integration

Stunden

Nightly

Tag

Snapshot

Wöchentlich

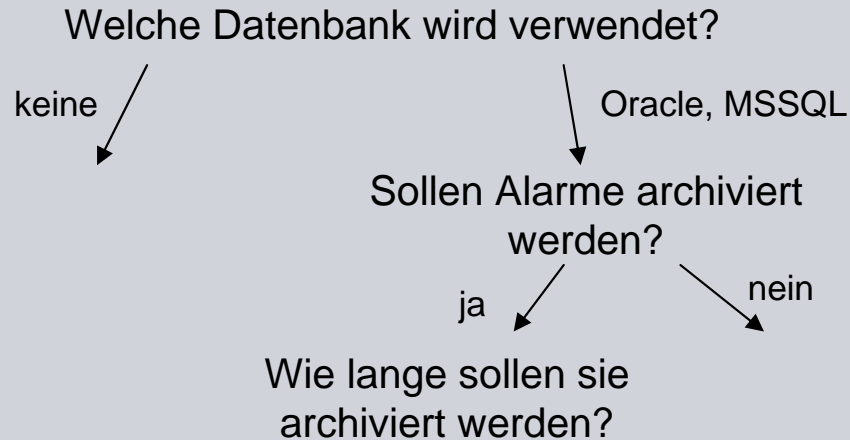
Public Release

Quartalsweise



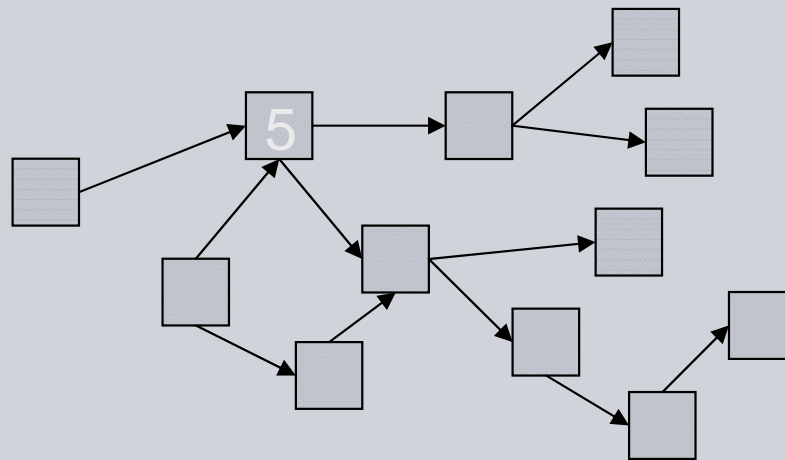
Sichten auf Produktlinien

Entscheidungen

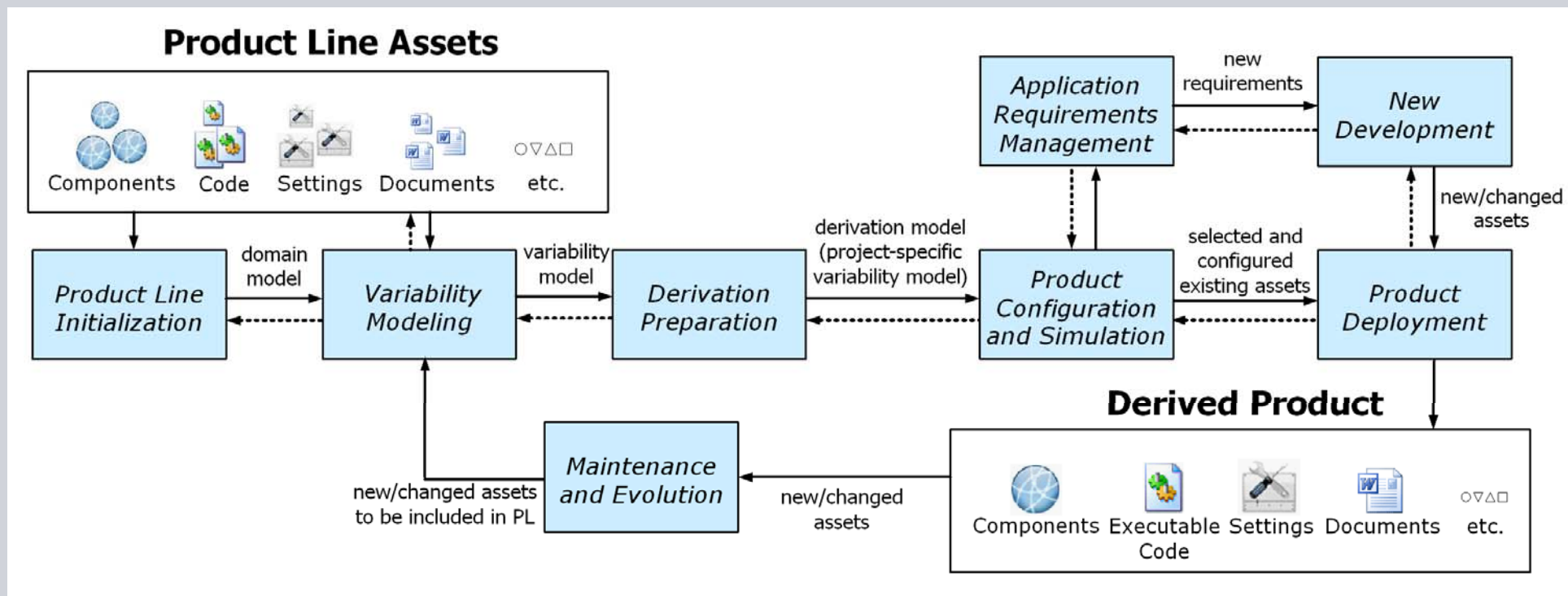


- Variabilität
 - welche Komponenten sind dabei?
- Konfigurierbarkeit, Parametrisierung
 - wie werden die Komponenten eingestellt?

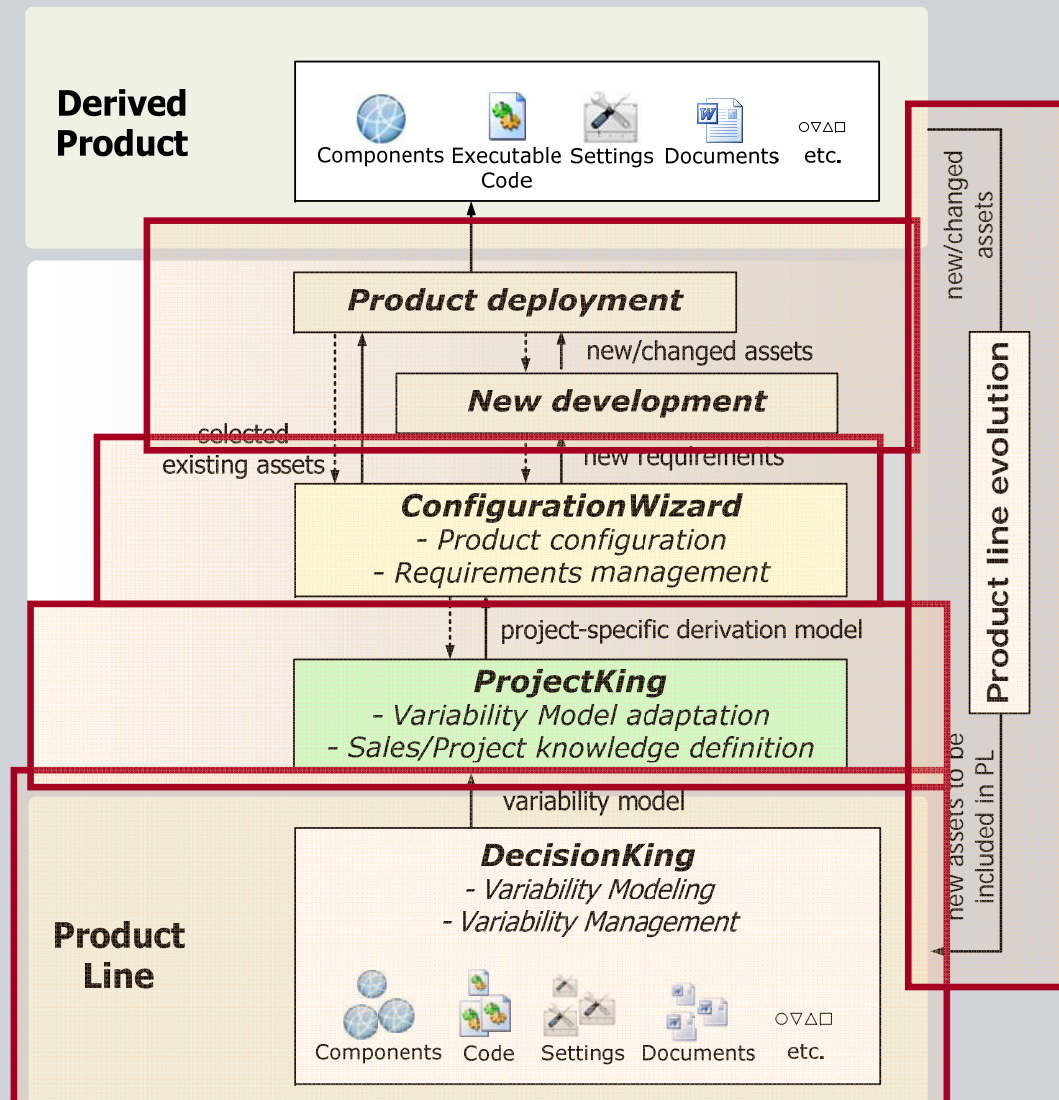
Komponenten



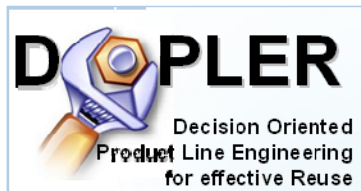
Product Line Engineering DOPLER



Product Line Engineering DOPLER



Vielen Dank für Ihre Aufmerksamkeit!



**JOHANNES KEPLER
UNIVERSITÄT LINZ**
Netzwerk für Forschung, Lehre und Praxis



<http://ase.jku.at>

Kontakt

Martin Lehofer

Software Engineer
I IS MT PEP PL33

Tel.: +43 70 6989 8933

Fax: +43 70 6980 8271

Siemens VAI Metals Technologies GmbH & Co
Turmstr. 44
4031 Linz

E-Mail: martin.lehofer.ext@siemens.com